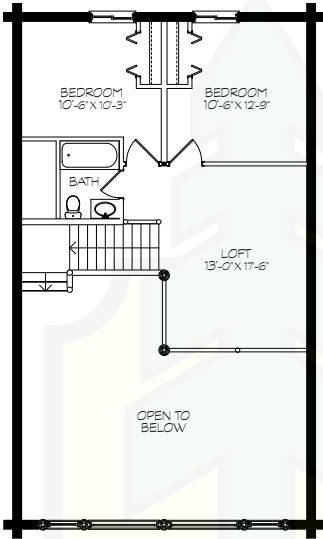


WYOMING 2

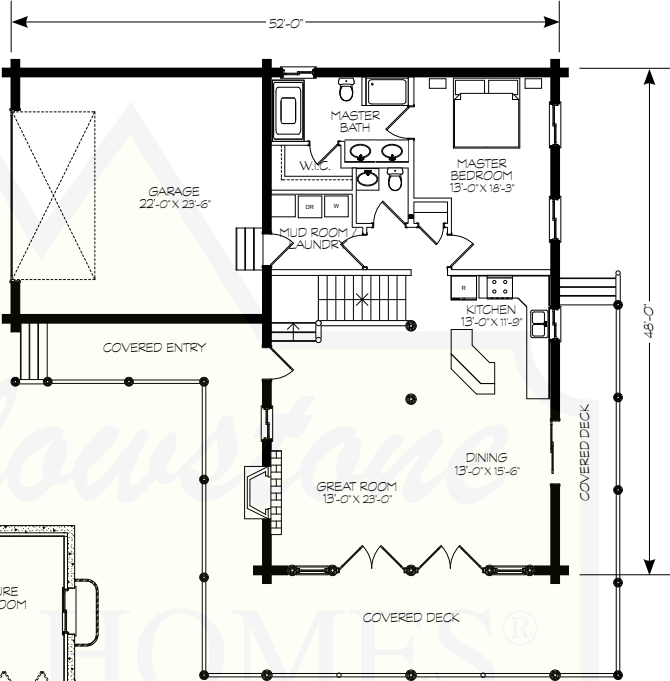


© Yellowstone Log Homes LLC

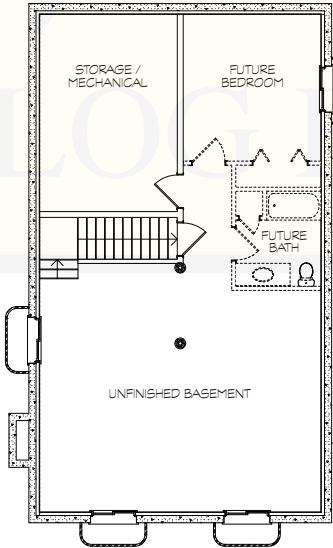
UPPER LEVEL



MAIN LEVEL



BASEMENT



MAIN LEVEL	1,344 SF
UPPER LEVEL	650 SF
BASEMENT	1,344 SF
LIVING AREA	3,338 SF
GARAGE	576 SF
TOTAL AREA	3,914 SF



280 N Yellowstone Hwy
 Rigby, ID 83442

phone: (208) 745-8108
 fax: (208) 745-8525

sales@yellowstonelohomes.com
 www.yellowstonelohomes.com