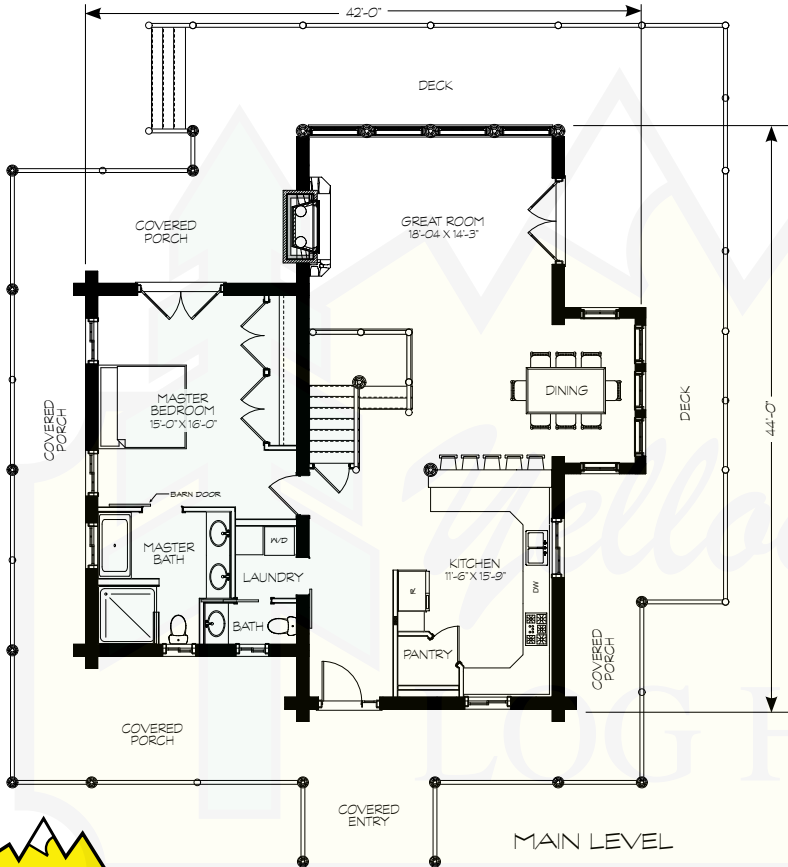


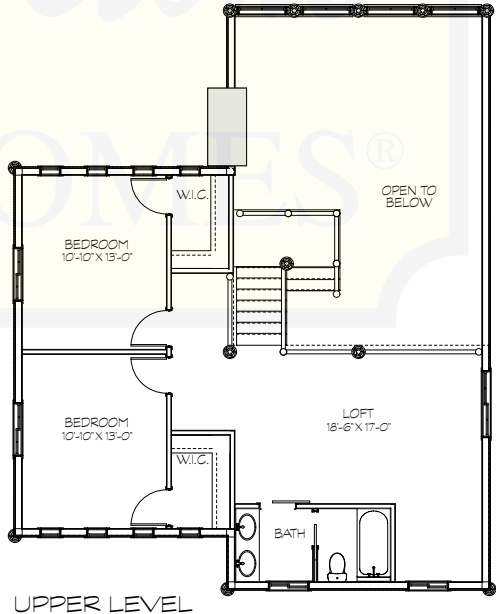
# CRAFTSMAN



© Yellowstone Log Homes LLC



MAIN LEVEL	1,400 SF
UPPER LEVEL	755 SF
TOTAL AREA	2,155 SF



280 N Yellowstone Hwy  
Rigby, ID 83442

phone: (208) 745-8108  
fax: (208) 745-8525

sales@yellowstonelohomes.com  
www.yellowstonelohomes.com