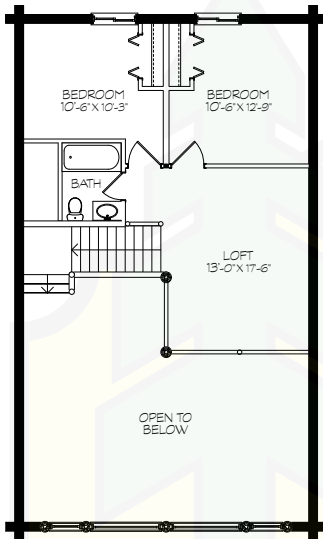


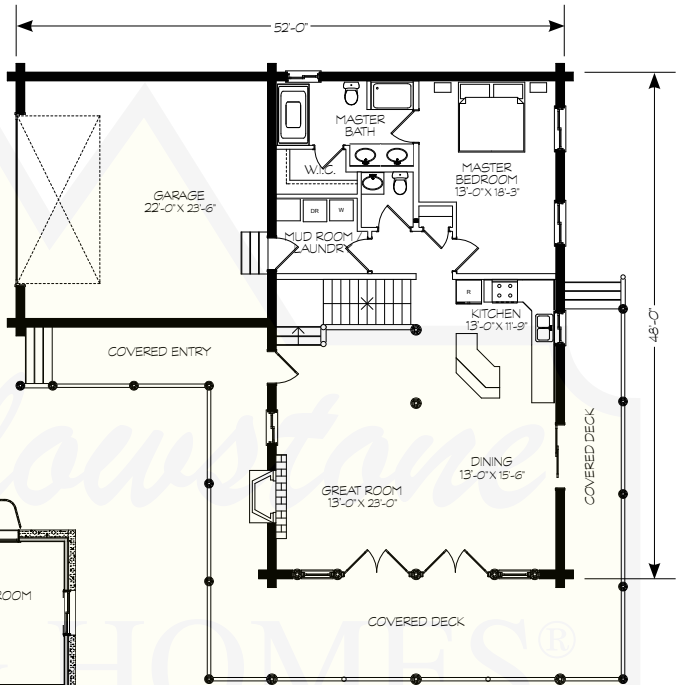
WYOMING 2



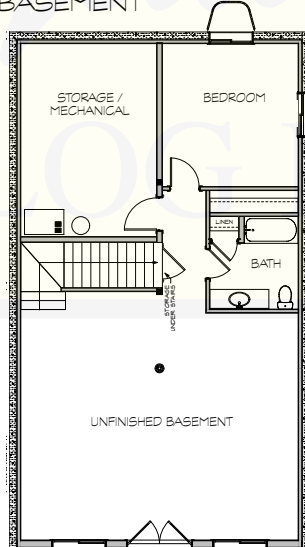
UPPER LEVEL



MAIN LEVEL



BASEMENT



280 N Yellowstone Hwy
Rigby, ID 83442

phone: (208) 745-8108
fax: (208) 745-8525

sales@yellowstoneloghomes.com
www.yellowstoneloghomes.com

MAIN LEVEL	1,344 SF
UPPER LEVEL	650 SF
BASEMENT	1,344 SF
LIVING AREA	3,338 SF
GARAGE	576 SF
TOTAL AREA	3,914 SF