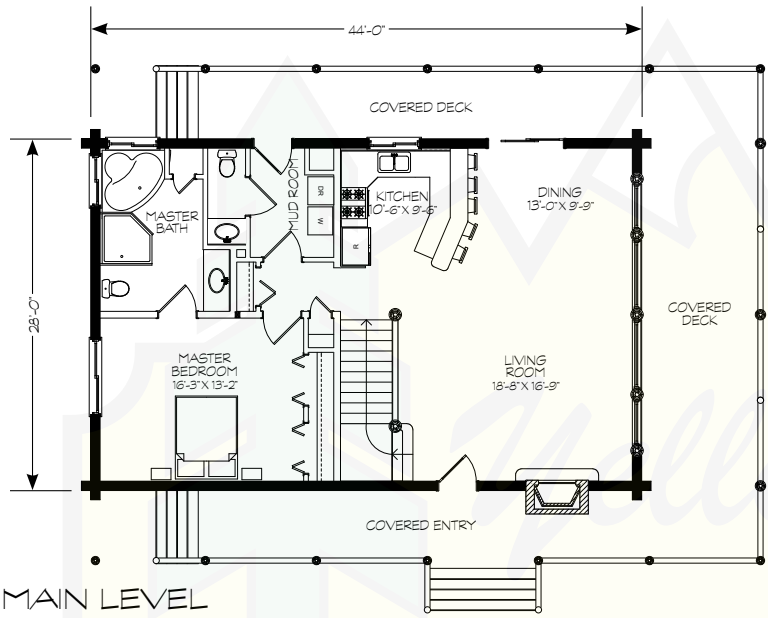


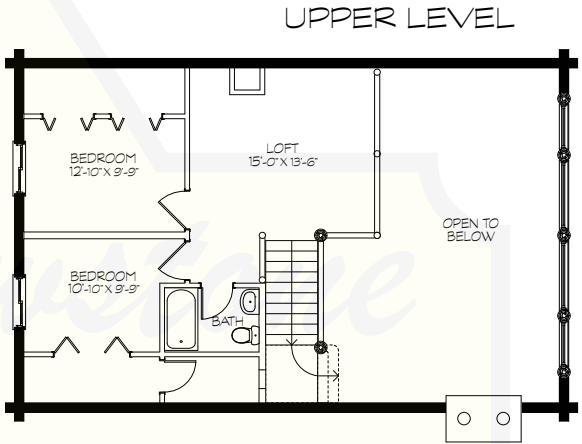
WYOMING



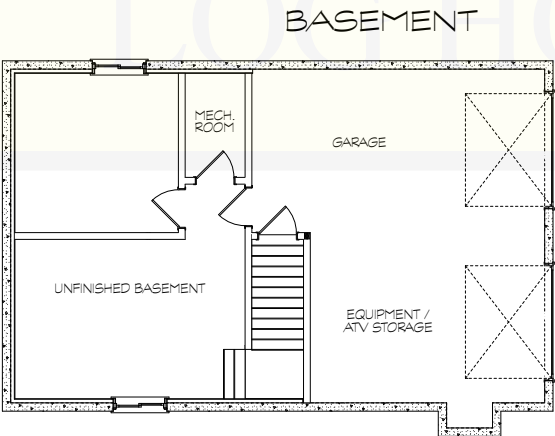
© Yellowstone Log Homes LLC



MAIN LEVEL



UPPER LEVEL



BASEMENT

MAIN LEVEL	1,232 SF
UPPER LEVEL	645 SF
BASEMENT	624 SF
LIVING AREA	2,501 SF
GARAGE	608 SF
TOTAL AREA	3,109 SF



280 N Yellowstone Hwy
 Rigby, ID 83442

phone: (208) 745-8108
 fax: (208) 745-8525

sales@yellowstoneloghomes.com
 www.yellowstoneloghomes.com