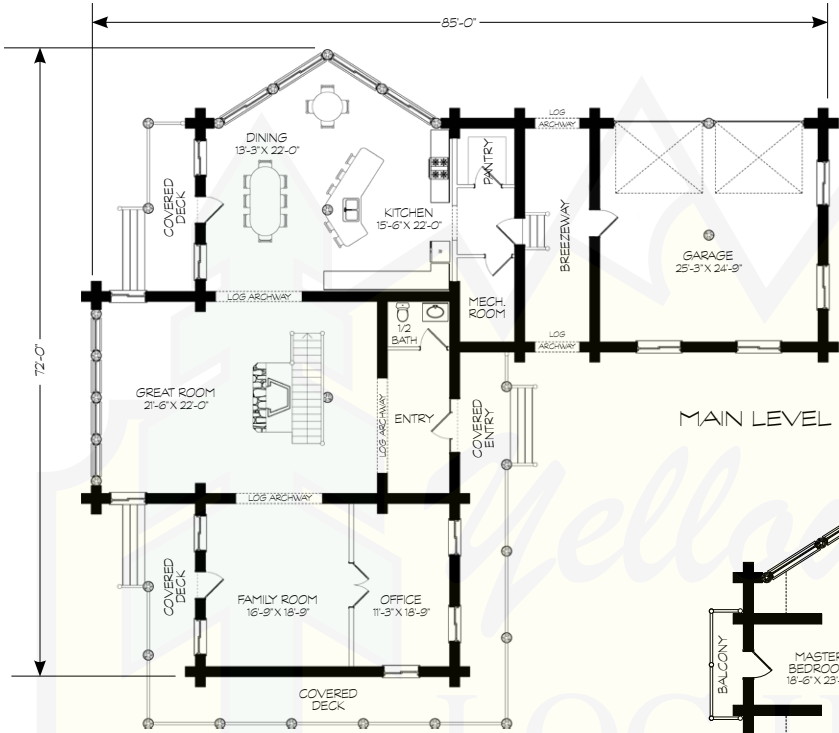


# SUMMIT

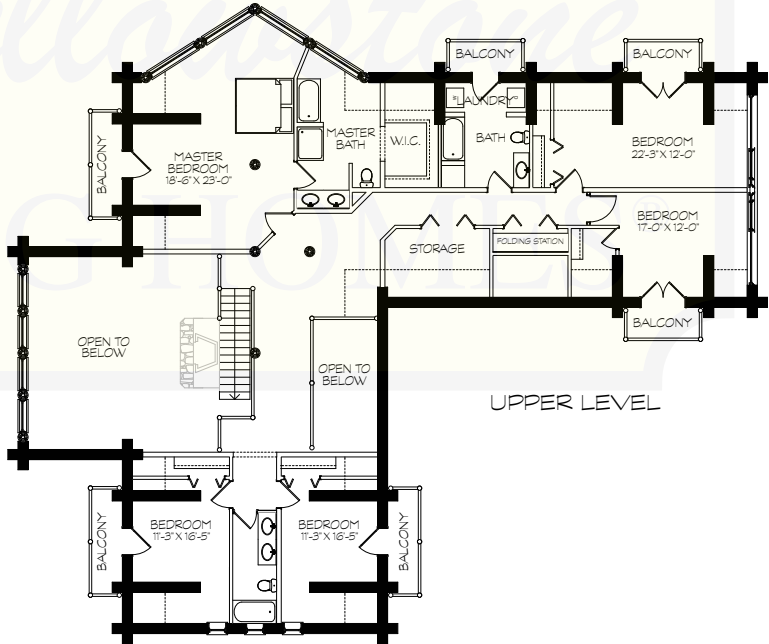


© Yellowstone Log Homes LLC



MAIN LEVEL	2,527 SF
UPPER LEVEL	2,611 SF
LIVING AREA	5,138 SF
GARAGE	720 SF
TOTAL AREA	5,858 SF

MAIN LEVEL



UPPER LEVEL



280 N Yellowstone Hwy  
Rigby, ID 83442

phone: (208) 745-8108  
fax: (208) 745-8525

sales@yellowstonelohomes.com  
www.yellowstonelohomes.com