


For their garage, homeowners Brian and Tareena McAllister chose Clopay steel doors. "They really mimic wood, and we added cedar trim to provide a carriage-door look," builder Scott Youngstrom says. "It's kind of a unusual thing to do, but it goes well with a log structure."

# Idaho Nights

High above Idaho Falls, a family's primary home feels like a vacation retreat every day.

story by Margaret Foster | photography by James Ray Spahn | styling by Colleen Macomber





A window high above the great room bathes the house in natural light. The McAllisters chose manufactured ledgerstone for the fireplace and exterior. "The rock and the logs just blended together," Brian says. "They fit the environment we're in—a desert that has all four seasons."



A slab of spruce is the perfect material for the eat-in kitchen's bar. "It's a log that's been ripped into slabs," builder Scott Youngstrom explains. The McAllisters chose custom-made knotty alder cabinets, tile countertops and hickory floors. As in most houses, the kitchen—especially the bar—is a popular spot. "We eat about 90 percent of our meals there," Brian says.





**I**t's dusk in the foothills above Idaho Falls, and the houses below light up the valley like fireflies. Far above the town, the McAllister family leans on the deck of their five-bedroom log home, which sometimes feels more like a getaway.

"It's like coming home from work to a vacation every day," says Tareena McAllister. On the Fourth of July, instead of fighting crowds, the family simply walks out onto one of their log home's many decks to watch the fireworks.

For their 4,400-square-foot house, the McAllisters chose a log package from Yellowstone Log Homes, a third-generation handrafter based in Rigby, Idaho, that has been in business since 1949. The full-scribe spruce home is a variation of one of the company's single-story home plans.

"It was designed to be a cabin," says builder Scott Youngstrom, who completed the house in 18 months. "We took it and changed the whole floorplan around—just

to make it more of a home than a getaway. It worked really well."

By moving the master bedroom upstairs and adding two bedrooms, the house became the perfect home for the McAllisters and their two children.

Yellowstone carved out a hillside to build the McAllister house, and the steep site was tricky, Scott remembers. "When it came time to deliver the log package, the semi couldn't make it up the driveway because it was too slick. We had to help drag the truck up the road."

The foothill setting allowed the McAllisters to add a two-level garage and a sunny walkout basement. "By building into the steep mountainside, we were able to carve out the side of the mountain so the backyard is totally secluded, which we really enjoy," Idaho native Brian adds.

Inside, Scott added a unique touch to the kitchen: a log-slab bar, which is where the family eats most of their meals. The space also boasts knotty alder cabinets and a slate floor.

**Think of it as Las Vegas without the dark, smoky casinos. The home's walkout basement has a sunny, Vegas-style game room, complete with slot machines. Adjacent to this room is the home theater, where the family goes to unwind. "That's my favorite room after a long day of work," Brian says.**

Inspired by Yellowstone National Park's Old Faithful Lodge and Disney World's Wilderness Lodge, the McAllisters decorated their house themselves, incorporating lots of wood furnishings, natural colors and soft, welcoming textures.

"The whole house is just open and inviting," Tareena says. "You don't have to go out of your way to entertain; the house does it for you."

But when the parties are over, the McAllisters retreat to the basement, which has two bedrooms, a Las Vegas-style game room and a workshop attached to the garage. The best feature, according to Brian, is the theater room. "After working all day," he says, "we rent a movie and watch it as a family. It's a nice break from reality." ■



**Hickory floors contrast well with the home's spruce logs, and the McAllister family chose extra touches, like this knotty alder post near the dining room, to create a unique space. "It's handcrafted, so each log has its own shape," Tareena says. "The character of each log is different."**



The McAllisters chose natural colors to complement the spruce logs. "I didn't want too much to overwhelm the house because it already has so much character from the logs. Our goal was rustic elegance," Tareena explains.



**LEFT:** Natural color in the master bathroom, one of the home's three, complements the spruce walls. Tareena chose faux-finish paint throughout the house to give depth to drywall. "It isn't just regular paint; it's more like art all over the walls," she says.

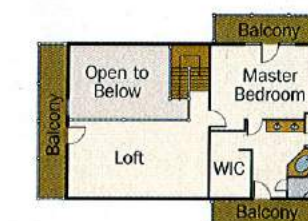
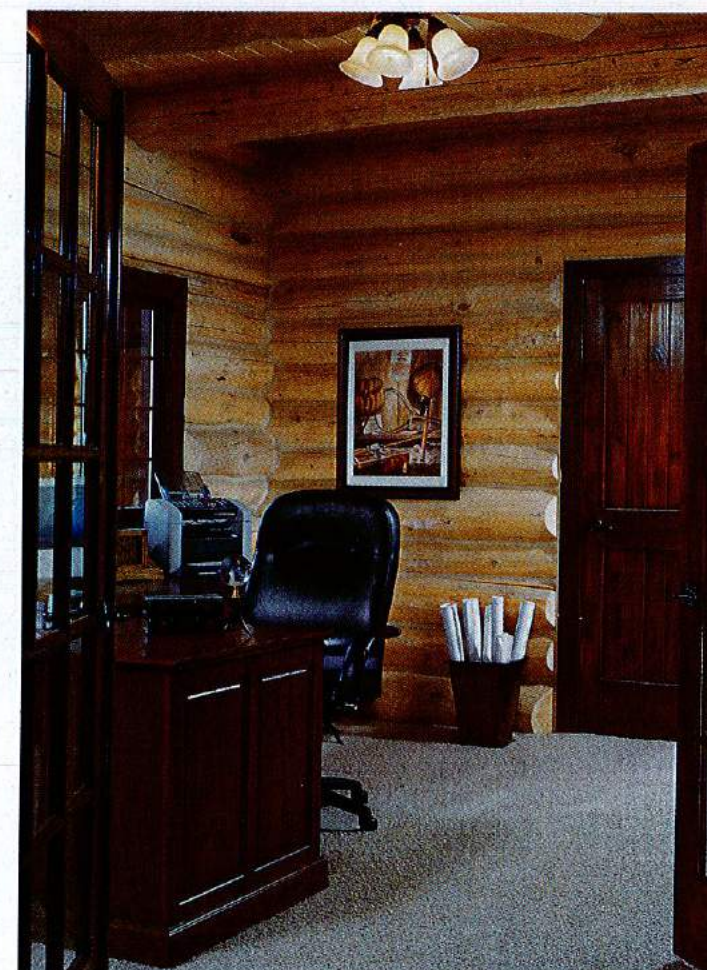
**BOTTOM:** By tweaking the floorplan of a single-story cabin, the McAllisters turned a main-level bedroom into an office. The family chose a mahogany stain for the home's trim and doors. "I love the darker stain. It matches the natural hues of the area where the home is built," Tareena says.

## home details

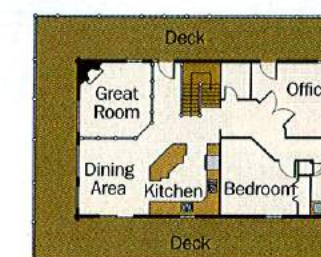
SQUARE FOOTAGE: 4,400

LOG PRODUCER:  
YELLOWSTONE LOG HOMES

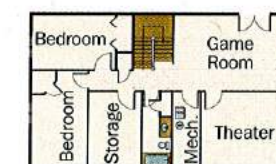
FOR MORE INFORMATION, SEE  
RESOURCES ON PAGE 91



Upper Level



Main Level



Lower Level

