

# combined effort

**t**he combined talents of the Ohligers brought out their best to create the ultimate log home retreat. With Steve's technical know-how and Judy's design flair, their spectacular home — high in the North Carolina mountains — is a seamless synthesis of art and technology.

The conductor for this orchestrated creation was Dominick Minotti Jr. of Wahconah Log Homes, a representative for Yellowstone Log Homes. With his background and knowledge of the local construction business, he listened carefully to the Ohligers' requests and set out a plan to build their home.

"We started with literally a piece of note

HOW DO YOU DESIGN A CUSTOM WOOD HOME TO MEET THE SPECIFIC REQUESTS OF A HUSBAND AND A WIFE? A NORTH CAROLINA COUPLE FINDS A WAY

*Below: The highly pitched six gables on the front of the home are topped with architectural antique slate-colored shingles that resemble copper with a patina. The home was sited on a level spot on a North Carolina mountainside for a 360-degree view. The circle driveway was an answer to a tricky entrance up the hill.*

*Right: The horseshoe-shaped kitchen designed by Paul Bradham features raised panel cabinetry made of cherry in a natural finish, topped with a black glaze to create a rich and aged look. The main counters are made of black angola silver granite while the island stands out with a black, red, and brown striated granite called Lady's Dream. This combination complements the reddish backsplash on the walls made of Indian copper slate tiles placed at an angle.*



STORY RONDA MOLLIKA PHOTOGRAPHY JAMES RAY SPAHN STYLING MAUREEN MACOMBER



book paper when I met the Ohligers at their site," Minotti says. "I began to draw the plan while listening to Judy and Steve so that I could capture all of their ideas and incorporate them into the home. Each had specific requirements."

The home was to include lots of sunlight through the many windows and artful lamps found throughout the home. "It was vital that we have enough light in our log home," says Judy. "Knowing that logs absorb rather than reflect light, we added 50% more fixtures than what was originally intended. We wanted it to be warm and welcoming and not dark and cave-like."

The windows were designed to be wide and arched for a softened effect and enlarged wherever a view could be gained. For a touch of elegance, each window and doorway is framed with polished maple trim that stands out from the hand-hewn Engelmann spruce walls.

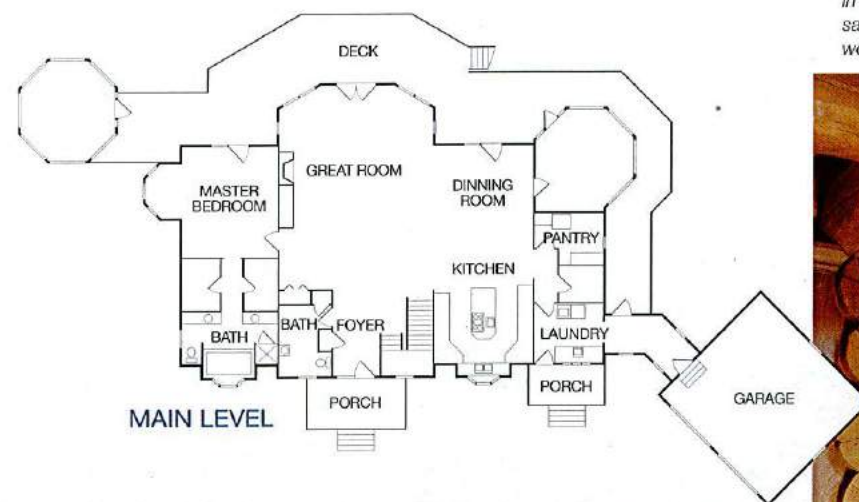
Steve's input included placing outlets every six feet rather than the standard 10 feet. "My background is in engineering and easily spot practical areas to improve and make life easier," says Steve. He also increased plumbing sizes, en-

"Knowing that logs absorb rather than reflect light, we added 50% more light fixtures than what was originally intended."

JUDY OHLIGER



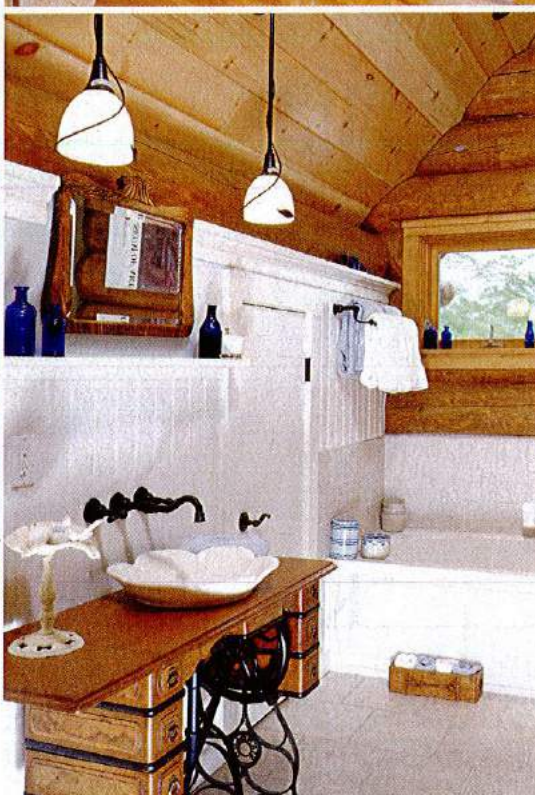
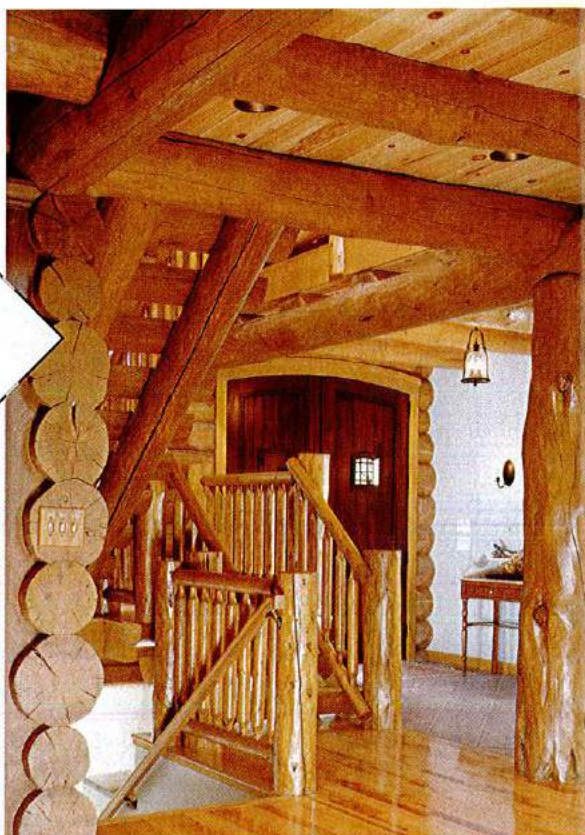
## combined effort



**Above:** The open dining room has room to grow when guests arrive — it can expand onto the outdoor decks through glass doors.

**Right:** An antique sewing machine transformed into a vanity is appropriately placed in the bathroom that adjoins Judy's sewing studio and Steve's office on the second floor. Coordinating with the black metal of the sewing machine are a black Danze wall faucet, Hubbardton Forge iron pendant lamps, towel racks, and hardware.

**Below:** Massive 14" character logs are found here in the foyer and throughout the home. The exposed saddle notch wall detail reflects the hand crafted work that went into building the home.



larged the doorways, widened the deck, and insisted on three separate heating zones based on room need and location.

Other practical changes continued. Judy enlarged the pantry, and Steve enlarged the mechanical room. Where Steve enjoyed the strength and notching of the log walls and trusses, Judy added curves and angles with alcoves in two of the bedrooms, a subtle prow in the great room and two gazebos on the deck to soften the look. "Although we might look at things differently, we work well together and even share a work space on the second floor," Judy says. The room is a robust 565 square feet and splits time as Steve's office and Judy's sewing studio.

Judy's appreciation of quilts that she sews goes hand in hand with her love of antiques. She's decorated the home with several family

**Left:** The massive king truss, made of 14-inch lodgepole pine logs, makes a strong statement in the Ohliger's 28-foot-tall great room. In addition to the random-width maple flooring, the Colonial-style window and door trim is made of polished maple to contrast with the rustic hand-hewn Engelman spruce logs.

**Below:** The rear guest bedroom a private balcony that provides one of the best views of the Smoky Mountains. This room, the other guest room, and a shared bath are on their own heating and cooling system.





## All decked out

When log home builders considering the type of building materials to use for their porches or decks, there are more choices to consider other than just redwood or treated wood. And there are decisions to make other than just cost, labor, and design. With today's various deck materials, home-owners may also consider maintenance, color, comfort, and safety.

One choice is composite material deck over a wood deck. Composite decking on a log or custom wood home may seem like heresy, but there are many advantages.

Though more expensive than standard decking, composites boast low maintenance and long-term good looks. It's impervious to rot and insect infestation and holds up to all weather conditions.

\* Composites come in a variety of shapes, colors, and grades. Made of a blend of plastic and recycled wood byproducts like sawdust and wood fibers, composites are available in hollow and solid profiles. Solid composite decking has more mass than the hollow variety and will expand and contract more. Hollow composites are more stable, but their lighter mass makes them more susceptible to damage.

With some exceptions (including western red cedar), most wood needs to be treated with chemicals to fight insects and rot. With wood, splinters can be a problem, but composite decking does not split, crack or weather like wood.

Because the technology is still somewhat new, the jury is out on how composite decks hold up over time. And industry experts often differ over issues such as color fading and the ability of composite decking to stay cool under a hot sun.

The quality of the material makes all the difference. Study the specifications of each composite to determine durability, expansion and contraction properties, density, strength and mold and mildew issues.

**Below:** The back of the home is equipped for life outdoors including a lower covered porch, 70-foot-wide upper composite deck, two gazebos (one with a hot tub and one with a dining area), and two balconies off second floor rooms. Building on a mountainside has its challenges (landscaping) and rewards (view).

heirlooms. A 200-year-old wing back chair in the great room offers one of the best seats in the house, overlooking the Smoky Mountains. Several old wood and cane rockers provide comfort and style. Her prized piece is a Sheraton-style secretary desk located in the home's library in the loft.

With all the challenges along the way and the decisions that had to be made, the couple navigated together to meet their goal. "Having lived in other homes, you soon learn what can be done better in the next house," states Steve. "I wanted to make sure this home would continue to work efficiently well into the future." CWI

### home bio:

SQUARE FOOTAGE: 7,782 BEDROOMS: 4 plus office BATHROOMS: 4.5  
LOG PRODUCER: Yellowstone Log Homes, Rigby, ID. To receive free information, circle 41 on the reader service card or go to [www.loghomesinfo.net/RS](http://www.loghomesinfo.net/RS) to order  
BUILDER/DEALER: Wahconah Log Homes Company, Inc., Dillsboro, NC  
WOOD SPECIES: Englewood pine  
STAIN: Sikkens, Natural oak inside, Butternut outside  
ROOFING: Elk, Grande High Definition  
DECKING: ChoiceDek  
KITCHEN: Keystone Kitchen and Bath

