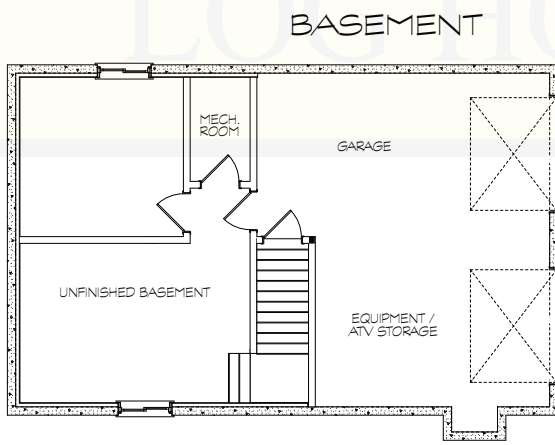
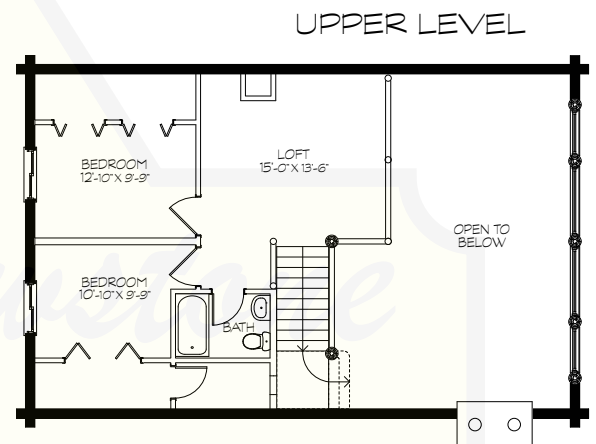
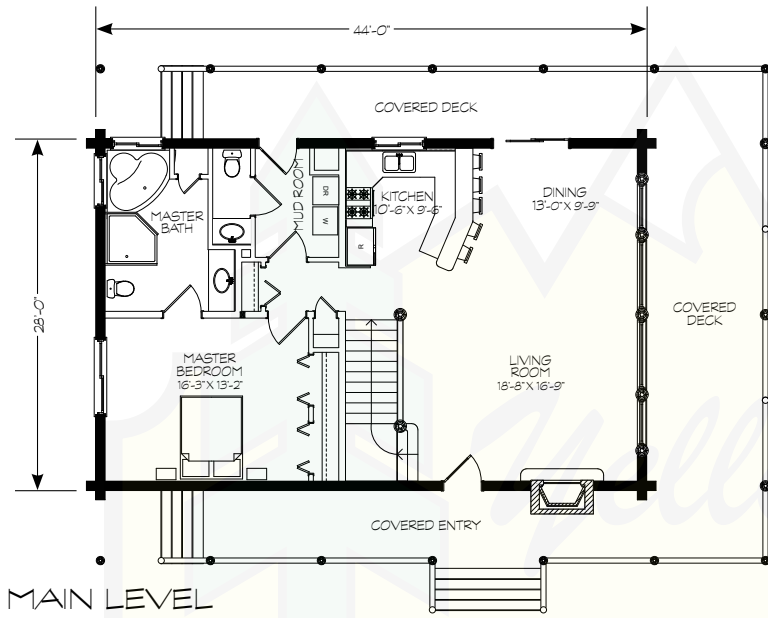


# WYOMING

**UPDATED**  
This plan has been improved from the original.



MAIN LEVEL	1,232 SF
UPPER LEVEL	645 SF
BASEMENT	624 SF
LIVING AREA	2,501 SF
GARAGE	608 SF
TOTAL AREA	3,109 SF



280 N Yellowstone Hwy  
Rigby, ID 83442

phone: (208) 745-8108  
fax: (208) 745-8525

sales@yellowstonelohomes.com  
www.yellowstonelohomes.com